

The Scale Manufacturers Association



**WWMA Annual
Conference**

September 24-28, 2017



Scale Manufacturers Association

SMA - The Beginning

- * **Established by scale industry leaders in 1945**
- * **First president Burns H. Dreese - Hobart Manufacturing Company**
- * **Hobart is still an active member over 70 years later**
- * **Currently have 17 member companies**

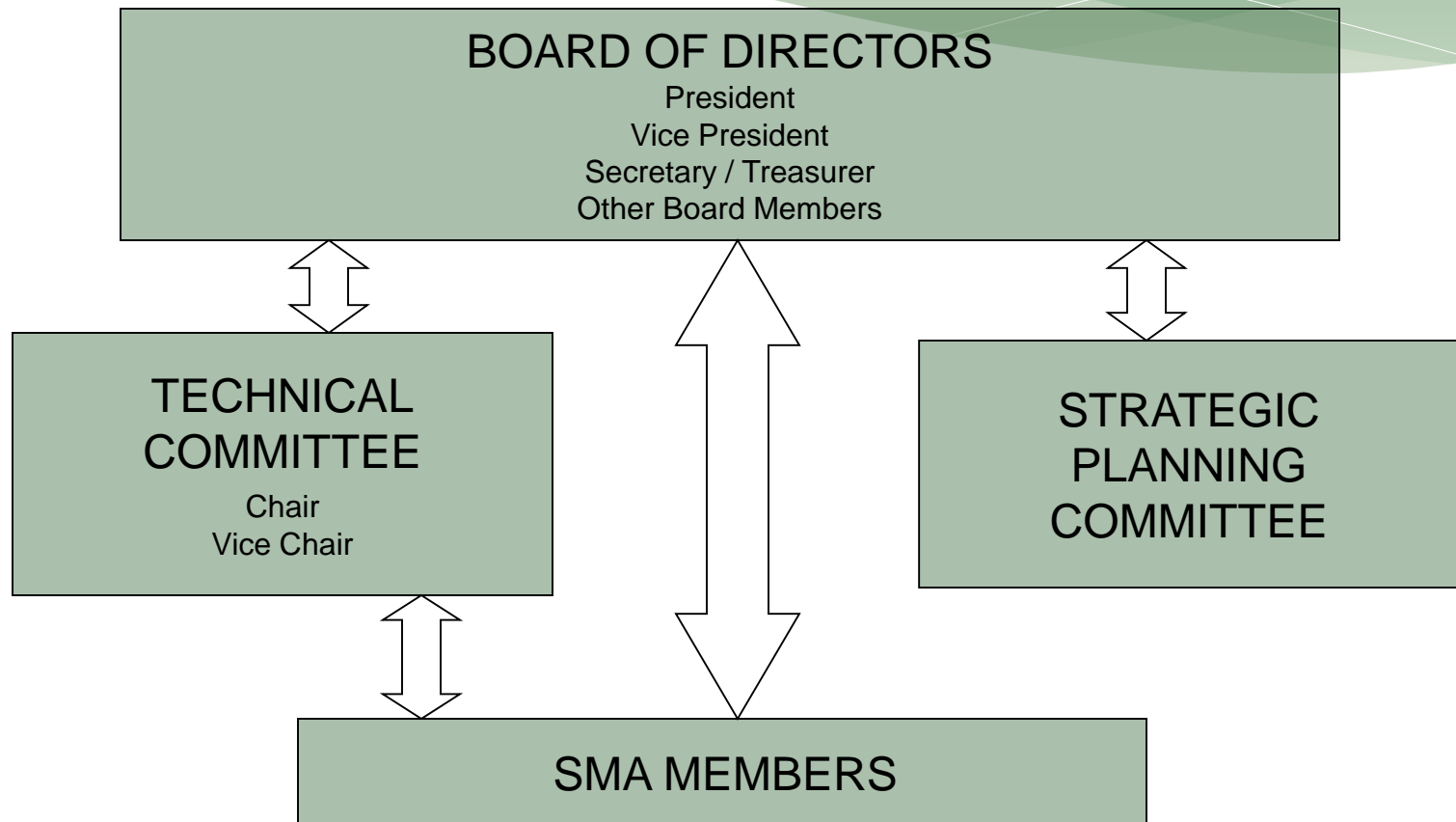
The SMA Mission

- * **Ensure equity in the marketplace for both the buyer and the seller as well as for the device manufacturer**
- * **Support the NCWM and the Regional WMAs - promote the exchange of ideas through open communication**
- * **Participate in the ongoing standards development of NIST Handbook 44**
- * **Maintain balance among its members - one vote per member company regardless of company size**

Member Companies



Our Organization



SMA Website

The SMA maintains its own website that contains:

- * Information about the association
- * Other information of interest to scale manufacturers, regulators and users

www.scalemanufacturers.org

Information on the SMA website includes:

SMA Technical Standards	Membership List with contact information
SMA Positions on NCWM Items	Information about the SMA
SMA Maps	Information about Legal Metrology
W&M Directors Questions and Responses	Membership Application

W&M Directors

Questions and Responses

- * Two or three questions selected from questions submitted by members, federal and state officials
- * Answers are provided by state and local jurisdictions during regional meetings
- * Results are posted on the SMA website
- * Aids in clarifying the interpretations of Handbook 44
- * Provides each jurisdiction the opportunity to hear comments from other jurisdictions

SMA Maps

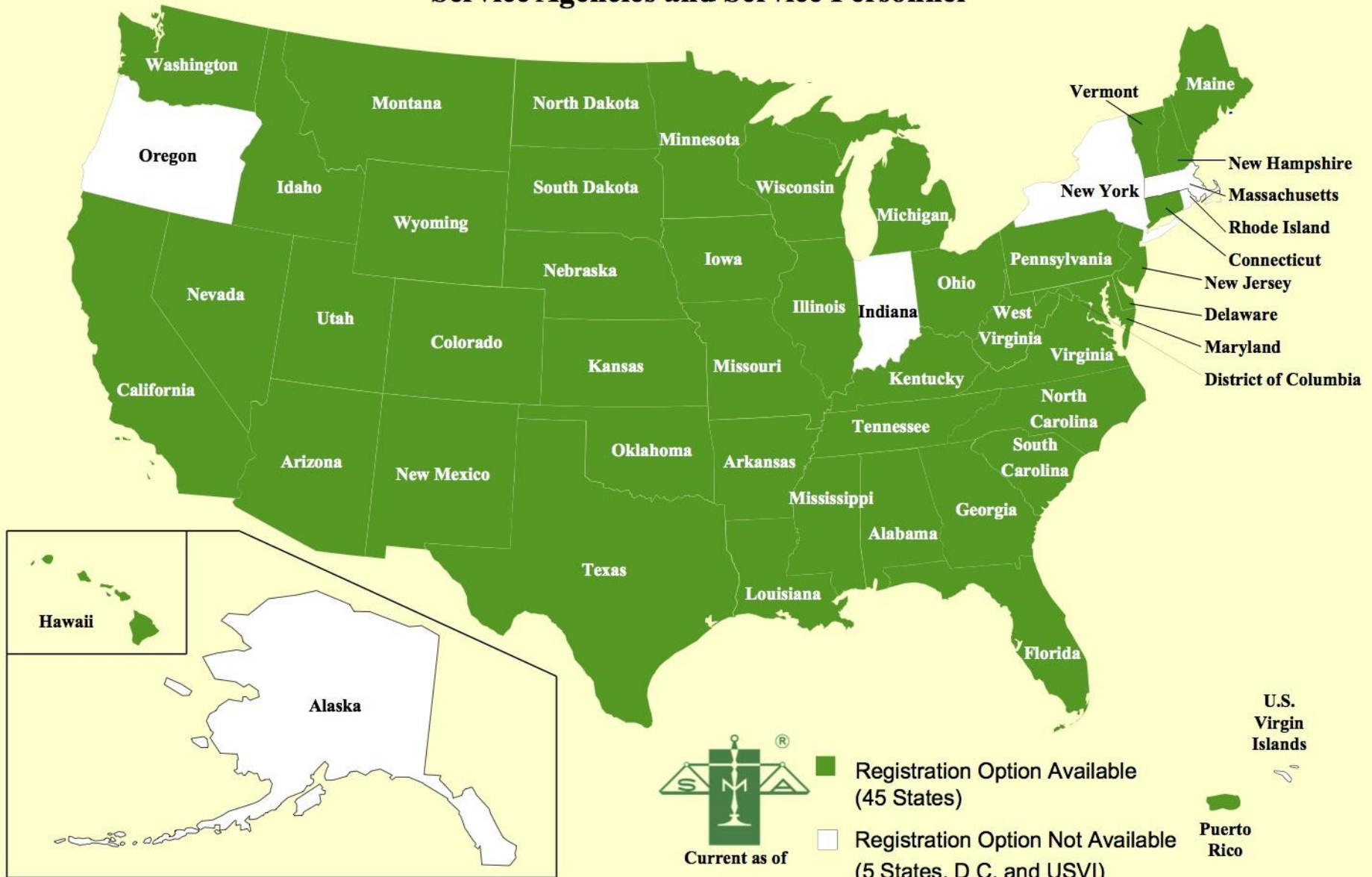
- * Two maps available on the SMA website show:
 1. States that require an NTEP certificate
 2. States that register Service Agencies and Personnel
- * Maps are referenced by those seeking information about local requirements
- * Information collected at the regional meetings is used to keep the maps current

Blue States Require a NTEP Certificate to Place a Legal For Trade W&M Device in Service



NTEP: Uniform Regulation for National Type Evaluation

Green States Require Registration of Service Agencies and Service Personnel



SMA & VCAP

- * The SMA developed a Production Meets Type (PMT) program and placed it in operation
- * The NCWM decided to develop their own assessment program
- * SMA members assisted the NCWM in the development of the current VCAP program under NCWM oversight

Thank You!



The Scale Manufacturers Association

Our Member Companies would like to thank you for the opportunity to share our story with you during your conference.

QUESTIONS ?



Scale Manufacturers Association

P.O. Box 26972

Columbus, Ohio 43226-0972

Ph: 866-372-4627

Email info@scalemanufacturers.org